



Flash Media Duplication

Secure and Repeatable Quality

1-800-3-DATAIO
www.dataio.com

Data I/O



Security

Thousands of flash cards are preloaded with content every day by product manufacturers, service providers, and by content resellers. Duplicating small flash cards reliably and consistently is a challenge, but error-free duplication is second to managing and securing content and IP. This is the Data I/O difference.

ERP integration

For networked control of job set-up and process flow. Image files are kept off the production floor and reserved for authorized access.



Duplication job parameters can be predefined with image access locked. Jobs are simply bar-code scanned and run. Serial data can be read, encrypted, and written back while ID data is logged and matched with production runs or specific product units.

Card Duplication

- 8.5+MB/sec card write speed capability (depending on card spec)
- 750 cards per hour automated throughput capacity at 512MB image size
- Support for SD/SDHC, miniSD, microSD, iNAND, MMCplus, MMCmobile, MMCmicro, eMMC
- Capability for image sizes above 32GB
- Proprietary interconnect technology for reliable signals and long life

Hardware Specifications

Automation: CAN-bus control architecture, self-contained pneumatic system, dual pick-and-place nozzles with individual Z and Theta axis, X-Y gantry, color touch-screen monitor and an embedded PC configured with Microsoft® XP Pro.

- 40GB Hard Drive
- Modular system duplicates 8 or 16 cards at a time in independent operation
- Tray input, Tray or Binned output options
- Compliance: CE/EMC, OSHA, RoHS

Physical Specification:

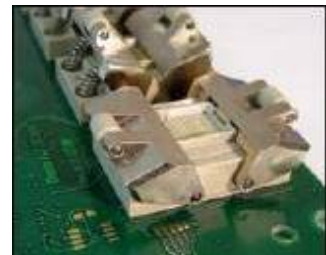
Length: 770mm (30.3 in)
Width: 592mm (23.3 in.)
Total Weight: 31.75kg (base unit)
Power: Switchable 110/220/240 VAC
Power Consumption: 500 watts, 50-60Hz

Quality

Data I/O's automated media duplication solution eliminates the handling errors associated with card cartridge boxes and a manual copying process.

Proprietary Interconnect

The system pick and place robot put cards into sockets that use very long-life, non-marking pogo-pin based interconnects that process over 250K cards each.



Service & Support

Data I/O's worldwide organization offers 24/7 coverage with service and engineering resources on three continents to serve our customers.



Flash Media Duplication

Secure and Repeatable Quality

1-800-3-DATAIO
www.dataio.com



Some typical write speeds for various 1GB card examples are detailed below. Write speeds and Read/Verify speeds depend on minimum/maximum card capability. Actual card/image size capability exceeds 32GB.

| Sample Cards | Card Format | Size | Write Speed | Write/Read Speed |
|---------------------|-------------|------|-------------|------------------|
| SanDisk Ultra II | MicroSD | 1GB | 7.84 MB/sec | 4.22 MB/sec |
| SanDisk Extreme III | SD Standard | 1GB | 8.60 MB/sec | 4.50 MB/sec |
| ATP ProMax 150x | SD Mini | 1GB | 8.57 MB/sec | 4.52 MB/sec |
| RiData 150x | SD Mini | 1GB | 7.90 MB/sec | 3.98 MB/sec |
| SDHC Class 2 | MicroSD | 1GB | 4.50 MB/sec | 3.18 MB/sec |
| Kingston SD | MicroSD | 1GB | 4.00 MB/sec | 2.70 MB/sec |
| Kingston MMC | MMCmobile | 1GB | 4.00 MB/sec | 2.90 MB/sec |

Excellent Customer Value & Efficient Processes

Higher Throughput at Lower Costs



USA: Data I/O Corporation: 6464 185th Avenue NE, Suite 101 Redmond, WA 98052 USA.
+1.425.881.6444 or +1.425.426.1045 <http://www.dataio.com>

Germany: Data I/O GmbH: Lochhamer Schlag 5, Graefelfing 82166, Germany.
+49.89.858.580 Fax: +49.89.858.5810 <http://www.dataio.de>

China: Data I/O China Ltd, Suite A, 25F Majesty Bldg., 138 Pudong Avenue, Shanghai 200120 China PRC
+86.21.5882.7686, Fax: +86.21.5882.5053 <http://www.dataio.com.cn>

Data I/O and FLX500™ are registered trademarks of Data I/O Corporation. TaskLink is a trademark of Data I/O Corporation. Data I/O Corporation acknowledges the trademarks of other organizations for their respective products or services mentioned in this document. Specifications subject to change without notice.
2007 Data I/O Corporation rev 200710 29